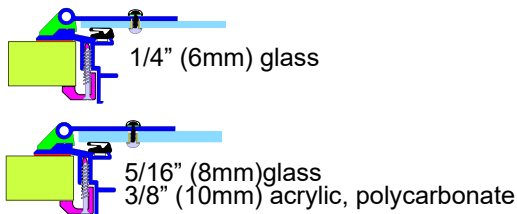
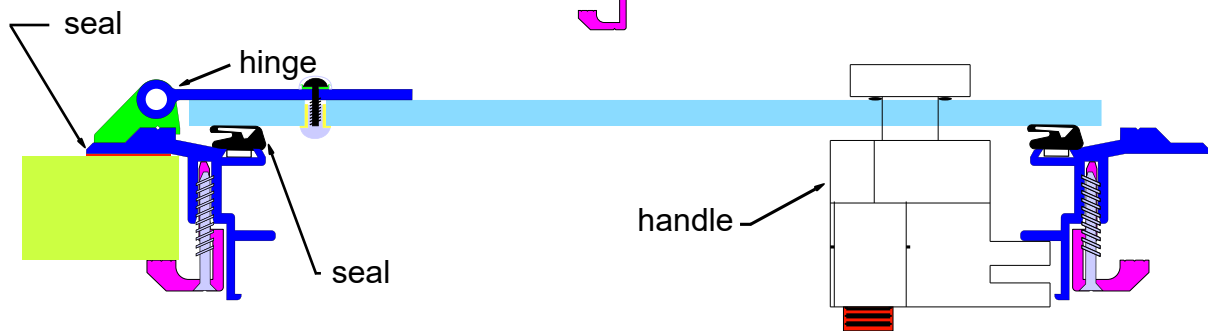
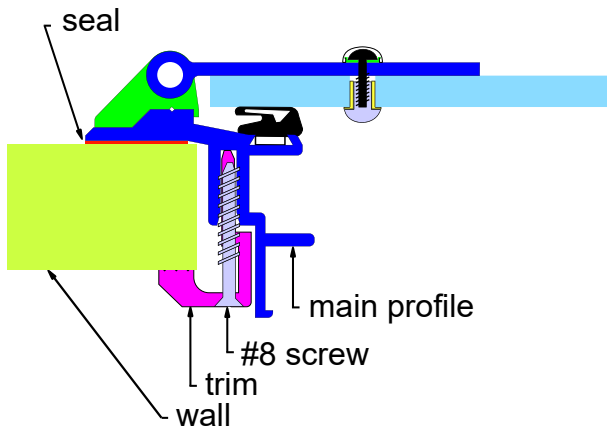
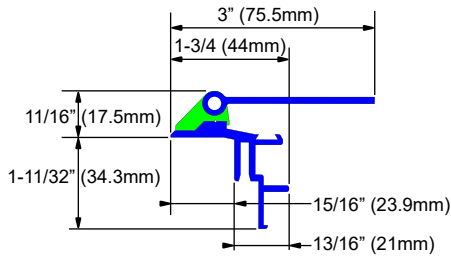
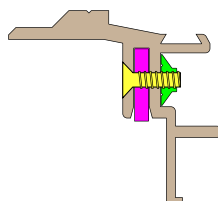


Nova Hatch

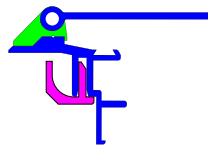
Principal dimensions



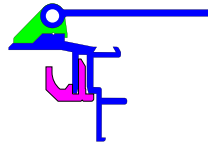
Connection assembly



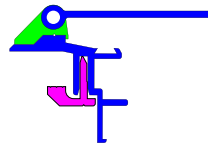
Screw length guide



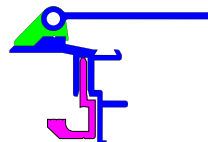
1/8" > < 5/8" (3mm > < 16mm)
Screw length = wall thickness + 1/2" (13mm)



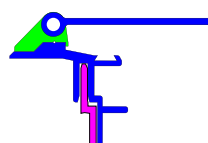
1/4" > < 3/4" (6mm > < 19mm)
Screw length = wall thickness + 1/2" (13mm)



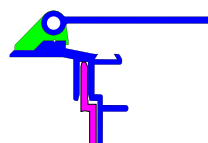
1/2" > < 1" (13mm > < 25mm)
Screw length = wall thickness + 1/4" (6mm)



1" > < 1-1/2" (25mm > < 38mm)
Screw length = wall thickness + 1/4" (6mm)



1-1/2" > < 2" (38mm > < 50mm)
Screw length = wall thickness + 1/4" (6mm)



2" > < 2-1/2" (50mm > < 63mm)
Screw length = wall thickness + 1/4" (6mm)

Information datasheet #3

Nova Hatch



1855 industrial blvd
Laval, Qc, H7S 1P5
Canada
Tel.: (450) 668-3113
ATS: 1-800-300-3113
www.bomon.com